

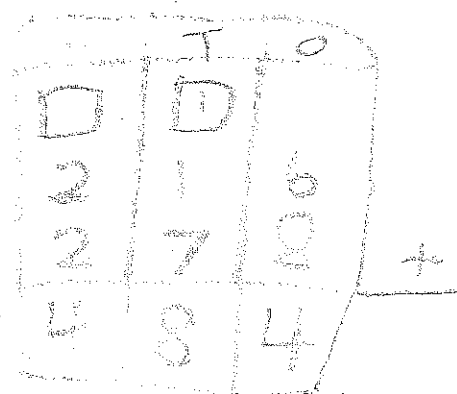
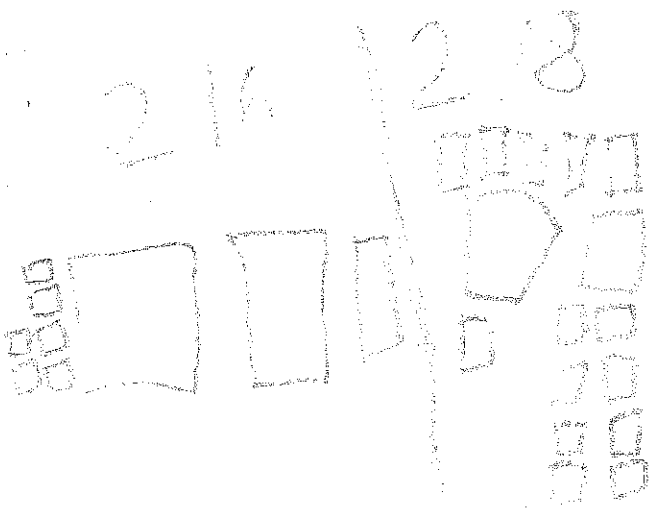
Sunshine Elementary has 216 first graders and 278 second graders.

All of the first and second graders are on the playground.

How many students are on the playground?

I

C



E

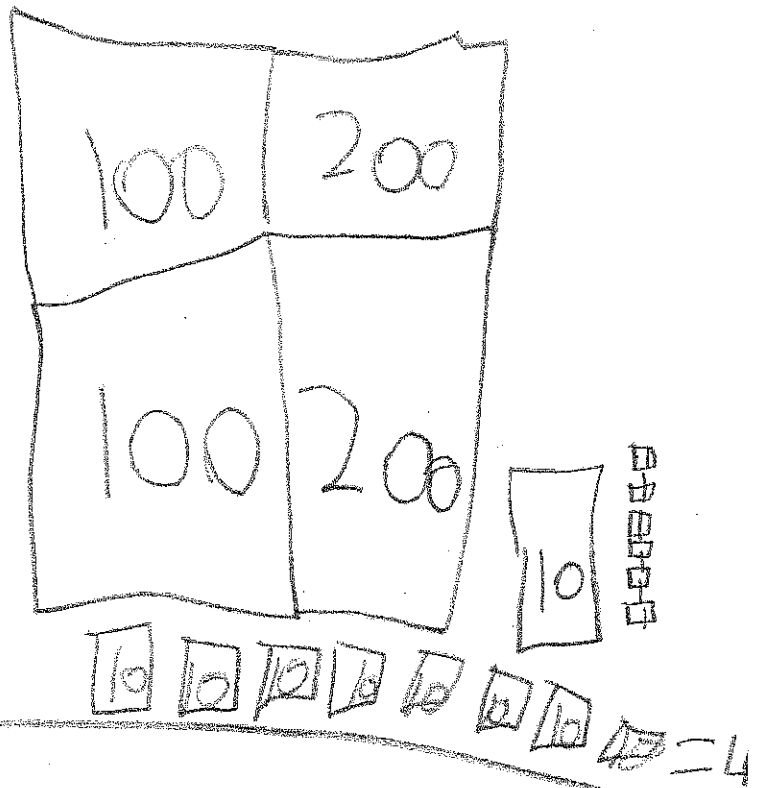
I think the answer is 484 because I added 216 and 278. I used addition because the problem said all of the kids were outside.

Sunshine Elementary has 216 first graders and 278 second graders.

All of the first and second graders are on the playground.

How many students are on the playground?

$$\begin{array}{r} 216 \\ + 278 \\ \hline 494 \end{array}$$



D

I ~~200~~ 200 = 400 16 + 78 = 94 that = 494

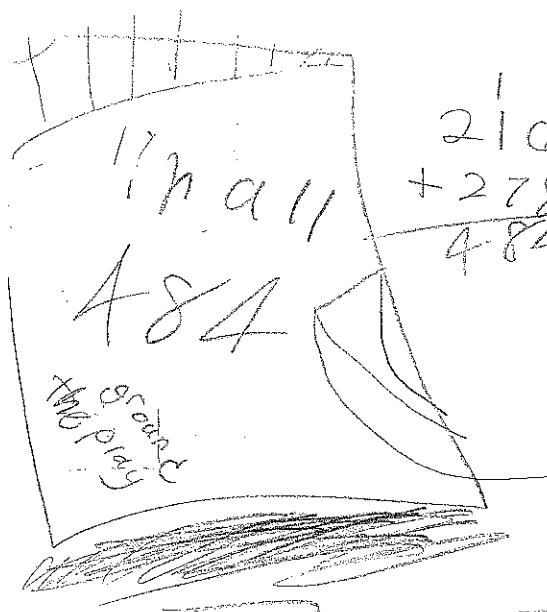
C

e

Sunshine Elementary has 216 first graders and 278 second graders.

All of the first and second graders are on the playground.

How many students are on the playground?



$$\begin{array}{r} 216 \\ + 278 \\ \hline 484 \end{array}$$

$$\begin{array}{r} 714 \\ 484 \\ - 278 \\ \hline 206 \end{array}$$

$216 + 278 = 484$	$484 - 278 = 206$	Fact Families
$278 + 216 = 484$	$278 - 484 = 206$	

I found it was my math strategies. I show all

second graders and first graders all together equal 484 and all

first graders. So the sum is 206 and for one side is 484.